

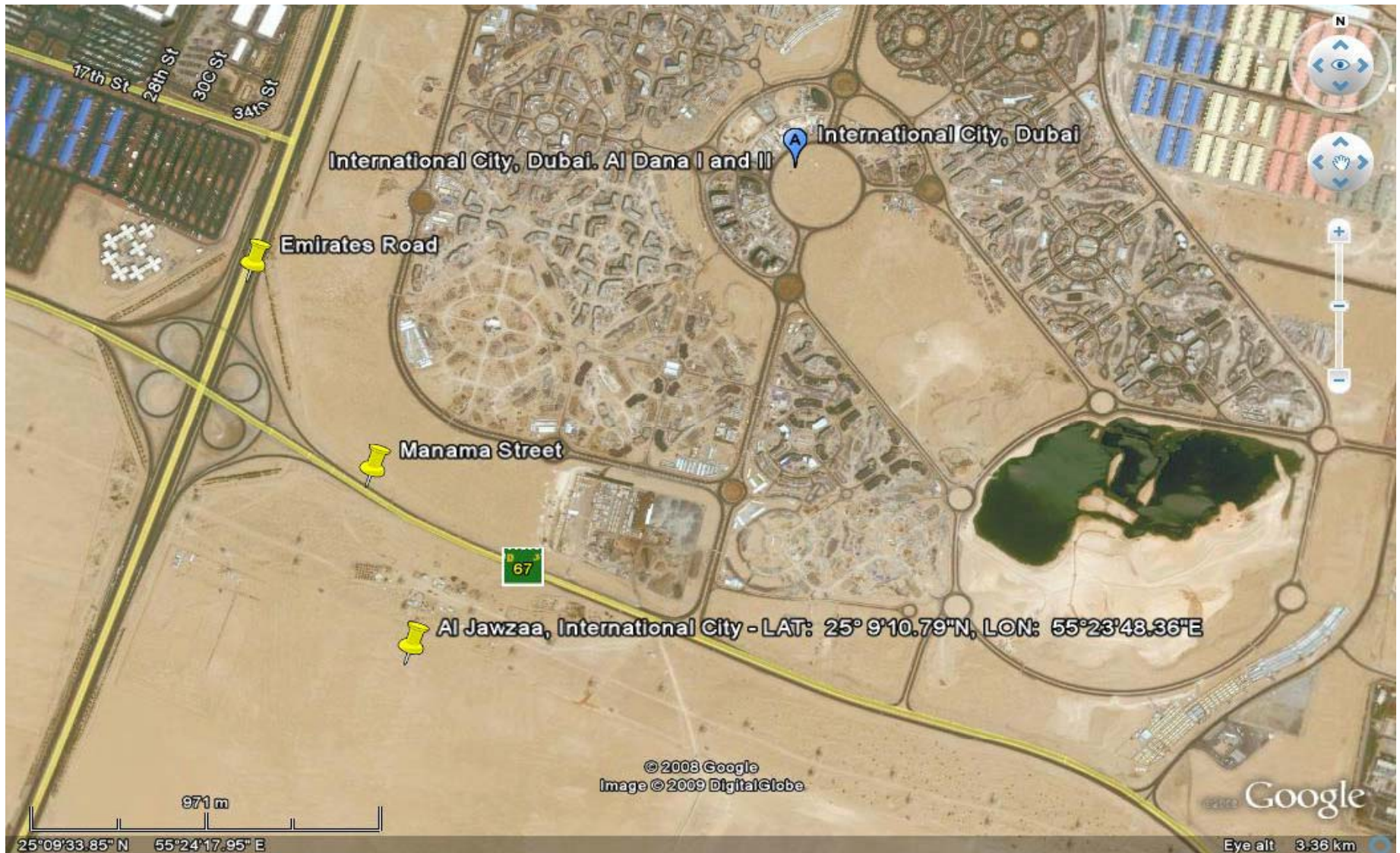
Projects Status Report

At End of July 2009

Al Jawzaa Towers



Al Jawzaa - Location



Al Jawzaa Towers

Location	International City – Phase 3
Plot Number	ICP3-L06L07-MR3
Built up Area (BUA)	240,117
Master Developer	Nakheel
Contractor	Al Araab & Al Musharif
Consultant	Eng Adnan Saffarini (EAS)
GPS Coordinates	Latitude: 25° 9' 10.79" N Longitude: 55° 23' 48.36" E
Expected Completion Date	September 2009
Milestones Completed	Substructure: 100% complete. Super Structure: 100% complete Lift: Building A & B: Complete. <u>Building A:</u> Block work 5 th floor complete, Plaster works at 4 th floor MEP high level works at 5 th floor <u>Building B:</u> block work 5 th floor complete, Plaster works at 4 th floor.

Al Jawzaa Towers



